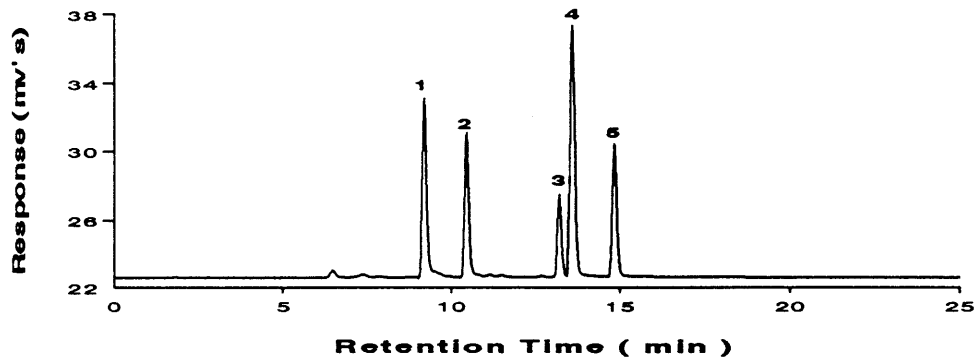


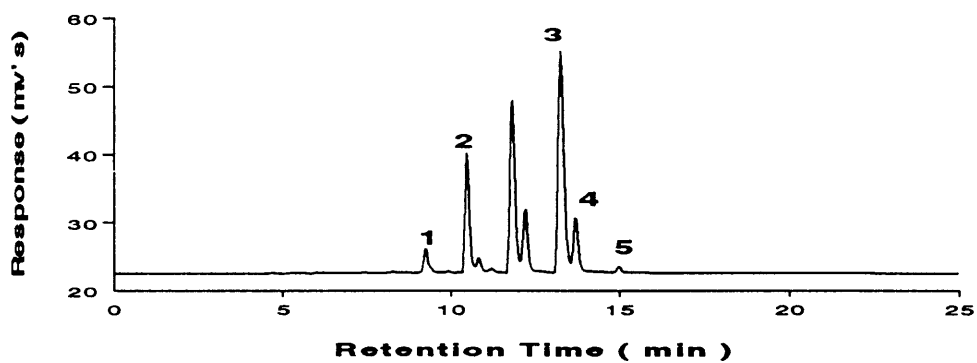
### Triglyceride Standards

**A**



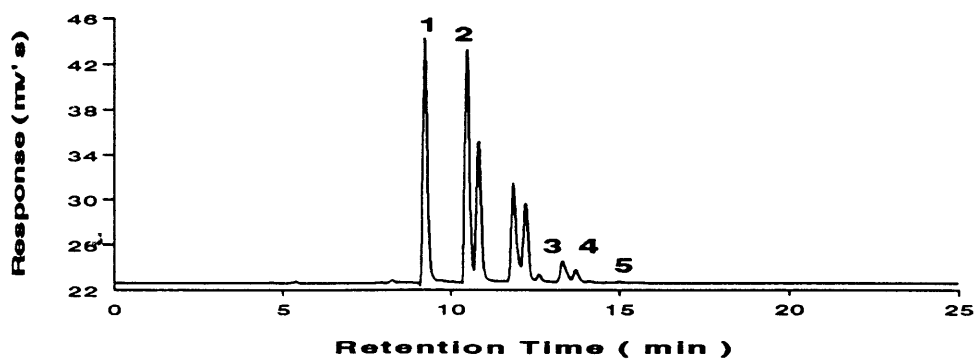
### Almond Oil 1 %

**B**



### Corn Oil 1 %

**C**



(1) Trilinolein, (2) 1,2-Dilinoleoyl-3-oleoyl-rac-glycerol, (3) Triolein, (4) 1,2-Dioleoyl-3-palmitoyl-rac-glycerol, (5) 1,2-Dioleoyl-3-stearoyl-rac-glycerol.