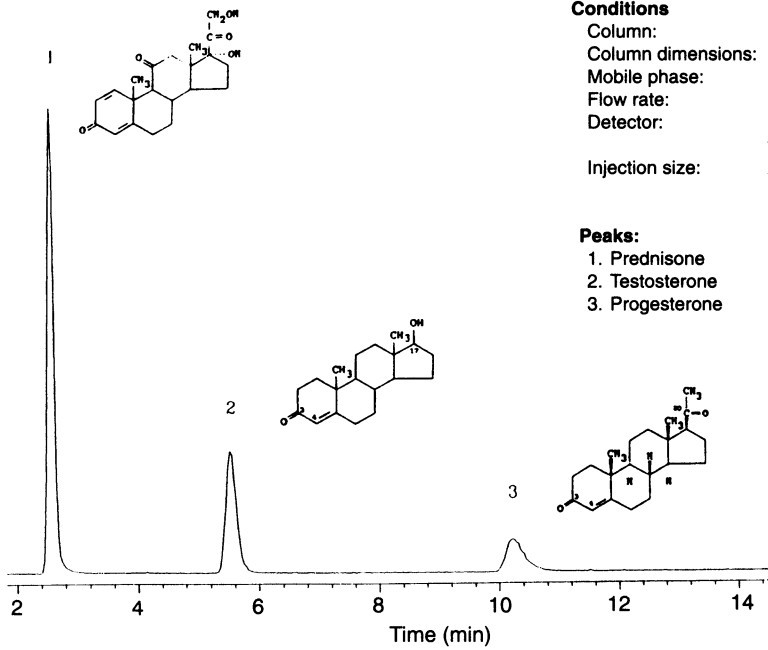


Atlas of Chromatograms

Liquid Chromatographic Separations

LC139

Steroids



Conditions

Column: 10 μ m Absorbosphere RP-18
 Column dimensions: 0.46 \times 25 cm
 Mobile phase: methanol-water, 70:30
 Flow rate: 1.5 mL/min
 Detector: evaporative light scattering detector (Varex);
 temperature, 135°C; N₂ gas, 65 mm
 Injection size: 20 μ L

Peaks:

1. Prednisone
2. Testosterone
3. Progesterone

LC139 is reproduced by per-

mission of William S. Letter, Varex Corporation (4000 Blackburn Lane, Burtonsville, Maryland 20866).