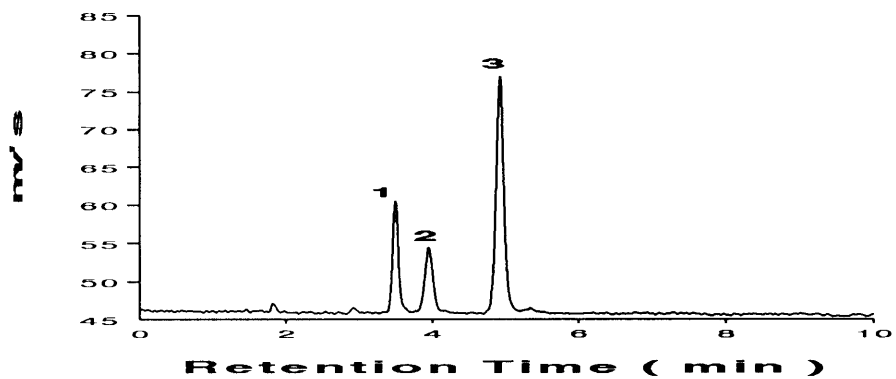
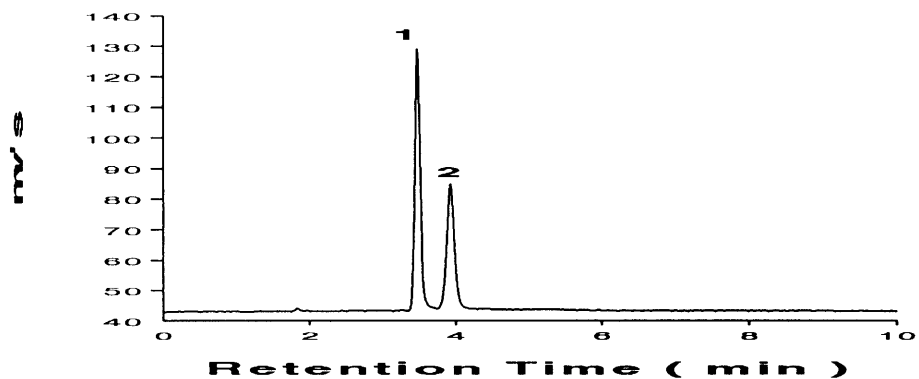


(1) Fructose; (2) Glucose; (3) Sucrose.

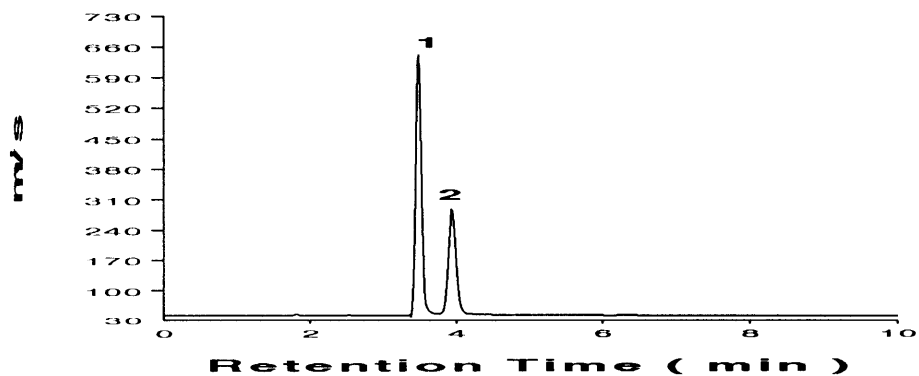
Orange Juice 0.1 %



Grape Juice 0.1 %



Sangria 0.1 %



VAREX IIA ELSD, 130C, Gas 60mm
Hypersil NH2, 5u (4.6 x 250mm). 75/25 (ACN:DH20) 1.500 ml/min